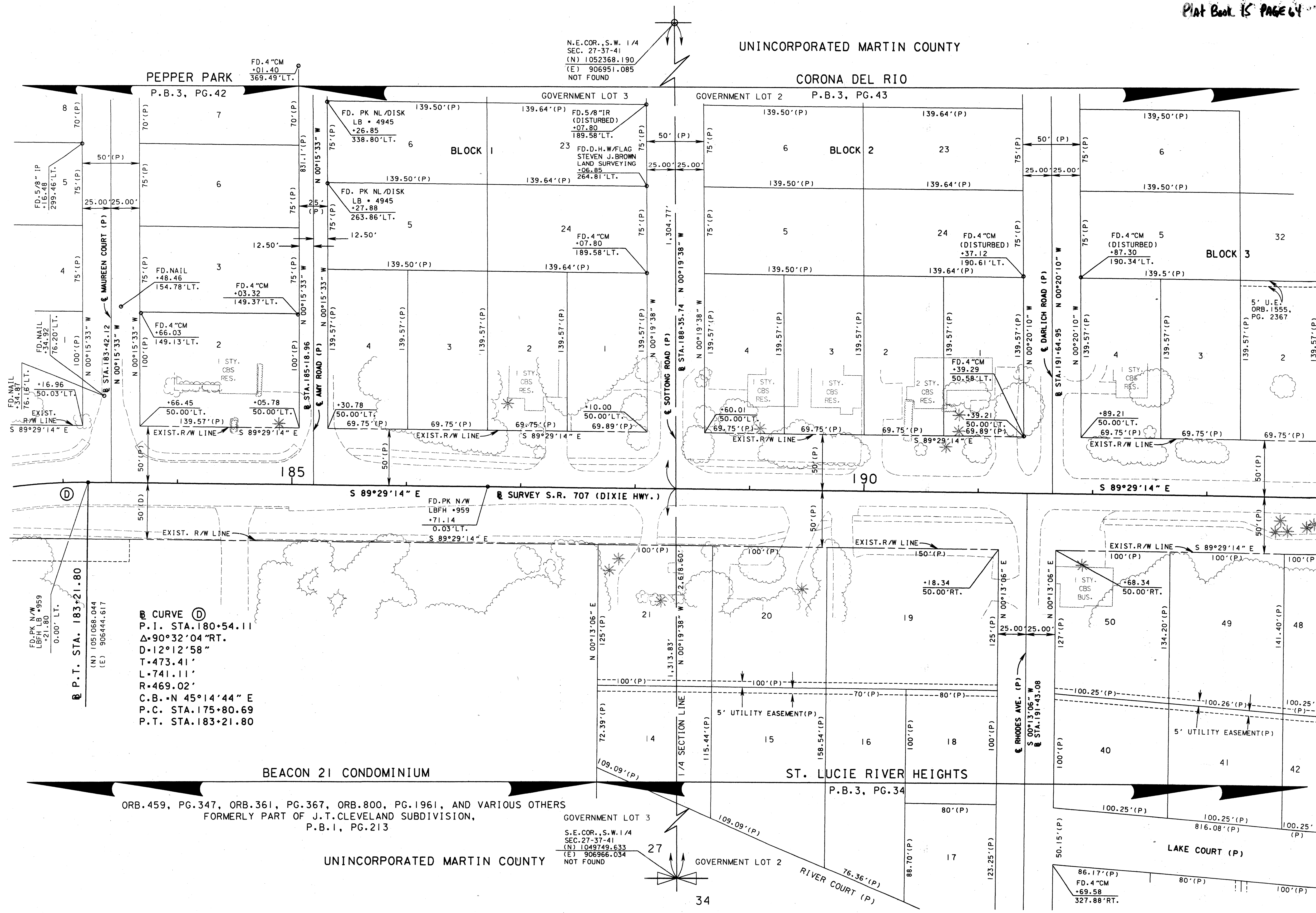


UNINCORPORATED MARTIN COUNTY

SEC. 27, TWP. 37 S., RGE. 41 E.

SCALE: 1" = 40'



Ⓢ CURVE D
 P.I. STA. 180+54.11
 Δ=90°32'04" RT.
 D=12°12'58"
 T=473.41'
 L=741.11'
 R=469.02'
 C.B.=N 45°14'44" E
 P.C. STA. 175+80.69
 P.T. STA. 183+21.80

B.P.T. STA. 183+21.80
 (N) 1051068.044
 (E) 906444.617

ORB. 459, PG. 347, ORB. 361, PG. 367, ORB. 800, PG. 1961, AND VARIOUS OTHERS
 FORMERLY PART OF J.T. CLEVELAND SUBDIVISION,
 P.B. 1, PG. 213

GOVERNMENT LOT 3
 S.E. COR., S.W. 1/4
 SEC. 27-37-41
 (N) 1049749.633
 (E) 906966.034
 NOT FOUND

N.E. COR., S.W. 1/4
 SEC. 27-37-41
 (N) 1052368.190
 (E) 906951.085
 NOT FOUND

SEE SHEET 1 FOR LEGEND
 AND GENERAL NOTES

STATE ROAD 707 (DIXIE HWY.)
 FROM SAVANNAH ROAD TO ARCH STREET

MAINTENANCE MAP	FLORIDA DEPARTMENT OF TRANSPORTATION RIGHT OF WAY MAPPING	APPROVED BY <i>J. Smith</i> DATE 5/12/03	BY L. CEFOLIA DATE 8/17/01	FED. PROJ. NO. N/A SECTION 89030-MAINT. (4)	MAPS PREPARED BY LB# 696 KIMLEY-HORN AND ASSOCIATES	FIELD BOOK NO.'S SEE SHEET 1
		DISTRICT RIGHT OF WAY SURVEYOR	FINAL L. CEFOLIA 4/03/03	STATE ROAD 707 (DIXIE HWY.) MARTIN COUNTY	W.P.I. No. N/A	SCALE: 1" = 40'
		REVISION BY DATE	CHECKED J. EDGAR 4/07/03	ITEM/SEGMENT NO. 4035911	SHEET 9 OF 12	

T:\GIS\DRAWING\89030-MAINT4\MAINT109.DGN